

## Thank you for choosing the Ezlo Smart Water Shut-Off Valve (Z-Wave Client Version)

You've taken the first step toward making your home smarter and safer.

We want set up to be as easy as possible, but if you're finding yourself in need of help, our outstanding customer care is here for you through the following channels:

-  Toll-free number 866 966 2272
-  International number +1 702 487 9770
-  support@ezlo.com
-  support.ezlo.com

Hours of Operation:

Monday to Sunday from 7AM - 10PM Eastern EST (during non-daylight savings time)



### 1. Including the Water Valve to your Z-Wave Hub

1. Follow the manufacturer instructions to set your Smart Home Z-Wave Hub into Inclusion mode to add the Water Valve.
2. Press the 'Include/Exclude' button once on your water valve. The LED light will blink orange during the inclusion process and stop when finished.
3. Continue with the inclusion process from your hub to complete the installation.

### 2. Excluding the Water Valve from your Z-Wave Hub

1. Set your Z-Wave Hub into Exclusion mode.
2. Press the 'Include/Exclude' button once on your water valve. The LED light will blink orange during the inclusion process and stop when finished.
3. Continue with the instructions from your hub to exclude the Water Valve.

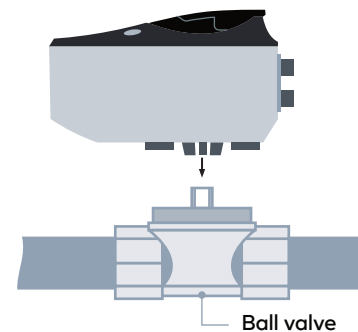
### 3. Association Group

The Water Valve supports Association Group 1 with up to 5 nodes. The Water Valve will react when receiving a BASIC SET 0xFF/0x00 or NOTIFICATION Type 5 Event 2 or 0 from associated devices. The valve will broadcast events to the hub using the same association group.

The Water Valve supports Security 2 authenticated and unauthenticated, S0 and no security. The Water Valve can be associated with any leak sensor with the same security type.

### 4. Connecting the Actuator to the Ball Valve

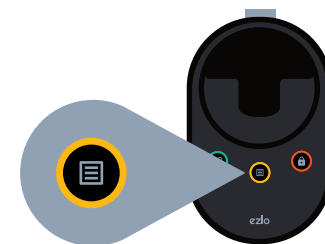
Once the ball valve has been plumbed into your home's water system, disconnect the Smart Water Shut-Off Valve from its AC power cable and snap it into the ball valve. Then reconnect it to a nearby power source.



If your Smart Water Shut-Off Valve is outside or plumbed away from a power source, you may need to use an extension cord.

### Reset to factory settings

To reset the Water Valve, press the Include/Exclude button for over 10 seconds. The LED ring will start blinking orange. The valve will send a "Device Reset Locally Notification" to the hub it was included on.



This procedure should only be used when the primary controller is inoperable.

Works well with many Z-Wave compatible hubs, works best when paired with an Ezlo Hub

The Ezlo Smart Water Shut-Off Valve works with many Z-Wave compatible smart home hubs but when paired with an Ezlo Plus or Ezlo Secure hub you get the power of MiOS, the first operating system designed specifically for property that lets you integrate all devices regardless of brand, automate devices with advanced scene-creation tools and visualize the status of all devices in your smart home on our dynamic dashboard. No matter if you're a mobile-first person or have to go advanced we have the right solution for you.



**ezlo**  
property. empowered.

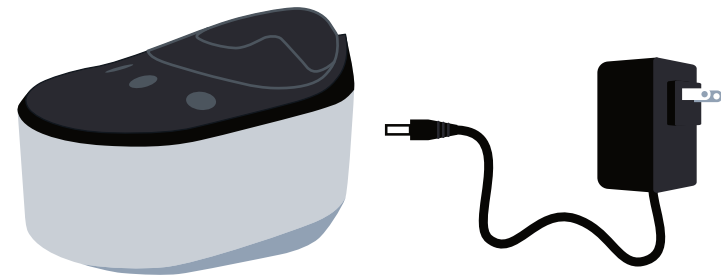
www.ezlo.com  
© Ezlo Innovation 2023

## Features

Total asset protection from water damage. Easy to install. Easy to operate:

- Quick, easy control from anywhere when paired with a Z-Wave hub
- Weatherproof and ready for outdoor use, IP67 rated
- Designed for over 20,000 on/off cycles (over 50 years) with automatic, weekly self-testing
- Features local controls and manual override in the event of power outage
- Fits any home size from MDUs to single family residences
- Compatible with ¾", 1", and 1½" pipe sizes for easy installation in new construction
- Ball valves sold separately
- Compatible with third-party Z-Wave hubs (it pairs as a device)
- Connects to 24V DC
- Supports S2 authenticated, unauthenticated, S0 and unsecure inclusion

## What's in the Box



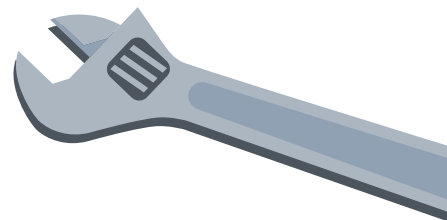
Actuator

Power Adapter

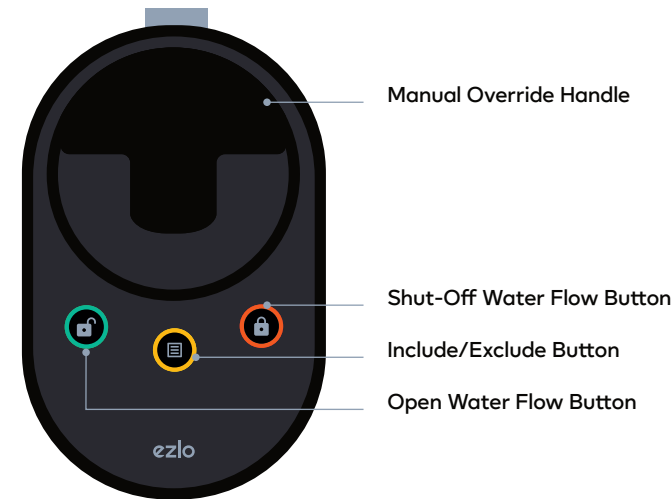
### What you'll need

- An Ezlo or other compatible Z-Wave Smart Home Hub
- ¾", 1" or 1½" Ezlo Ball Valve (sold separately)
- Home Wi-Fi Network
- iOS or Android Smartphone or Tablet

**NOTE:** The ball valve is plumbed directly into your home water main and may require professional installation. If you require assistance, please contact your local plumber before proceeding.



## Smart Water Shut-Off Valve Basics

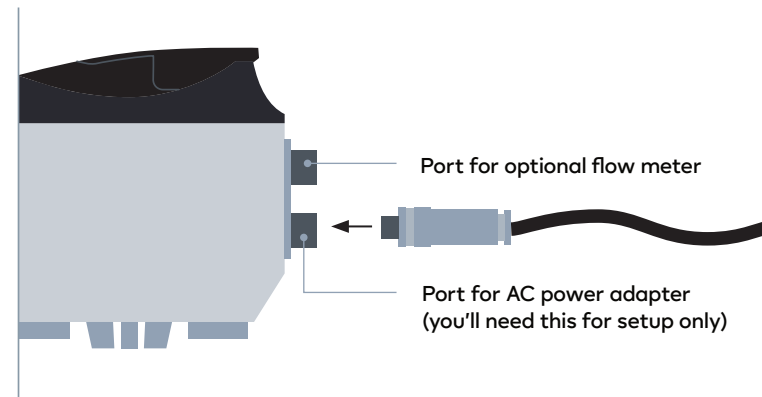


Manual Override Handle

Shut-Off Water Flow Button

Include/Exclude Button

Open Water Flow Button



Port for optional flow meter

Port for AC power adapter  
(you'll need this for setup only)

### Regulatory Information FCC Information:

This device complies with part 15 of the FCC Rules. Operation is subject to the following two conditions: (1) this device may not cause harmful interference, and (2) this device must accept any interference received, including interference that may cause undesired operation.

Note: This equipment has been tested and found to comply with the limits for a Class B digital device, pursuant to part 15 of the FCC Rules. These limits are designed to provide reasonable protection against harmful interference in a residential installation. This product generates, uses, and can radiate radio frequency energy and, if not installed and used in accordance with the instructions, may cause harmful interference to radio communications. However, there is no guarantee that interference will not occur in a particular installation. If this equipment does cause harmful interference to radio or television reception, which can be determined by turning the equipment off and on, the user is encouraged to try to correct the interference by one or more of the following measures:

Reorient or relocate the receiving antenna.

Increase the separation between the equipment and receiver.

Connect the equipment to an outlet on a circuit different from that to which the receiver is connected. Consult the dealer or an experienced radio/TV technician for help.

Please take attention that changes or modification not expressly approved by Ezlo Innovation could void the user's authority to operate the equipment. This equipment should be installed and operated with a minimum distance 20cm between the radiator and your body.

Industry Canada ICES-003 Compliance

This device meets the CAN ICES-3 (B)/NMB-3(B) standards requirements.

This device complies with Industry Canada licence-exempt RSS standard(s). Operation is subject to the following two conditions: (1) this device may not cause interference, and (2) this device must accept any interference, including interference that may cause undesired operation of the device. Under Industry Canada regulations, this radio transmitter may only operate using an antenna of a type and maximum (or lesser) gain approved for the transmitter by Industry Canada. To reduce potential radio interference to other users, the antenna type and its gain should be so chosen that the equivalent isotropically radiated power (e.i.r.p.) is not more than that necessary for successful communication.

This equipment complies with IC RSS-102 radiation exposure limits set forth for an uncontrolled environment. This equipment should be installed and operated with minimum distance 20cm between the radiator & your body.

### Conformité ICES-003 d'Industrie Canada

Le présent appareil est conforme aux CNR d'Industrie Canada applicables aux appareils radio exempts de licence. L'exploitation est autorisée aux deux conditions suivantes:

l'appareil ne doit pas produire de brouillage, et

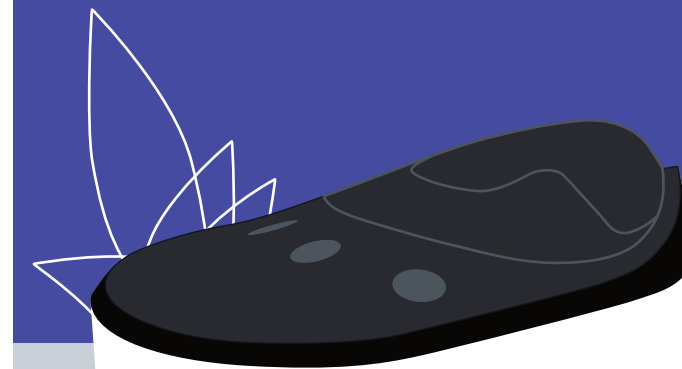
l'utilisateur de l'appareil doit accepter tout brouillage radioélectrique subi, même si le brouillage est susceptible d'en compromettre le fonctionnement.

Les antennes utilisées pour cet émetteur doivent être installées pour fournir une distance de séparation d'au moins 20 cm de toutes les personnes et ne doivent pas être co-localisées ou fonctionner en conjonction avec une autre antenne ou émetteur.

En vertu des réglementations d'Industrie Canada, cet émetteur radio ne peut fonctionner qu'avec et une antenne d'un type et d'un gain maximal (ou inférieur) approuvés pour l'émetteur par Industrie Canada. Pour réduire les interférences radio potentielles avec d'autres utilisateurs, l'antenne type et son gain doivent être choisis de manière à ce que l'équivalent rayonné de manière isotrope puissance (e.i.r.p.) n'est pas supérieure à celle nécessaire pour une communication réussie.

# Smart Water Shut-Off Valve (Z-Wave Client Version)

## Quick Start Set-up Guide



**ezlo**  
property. empowered.